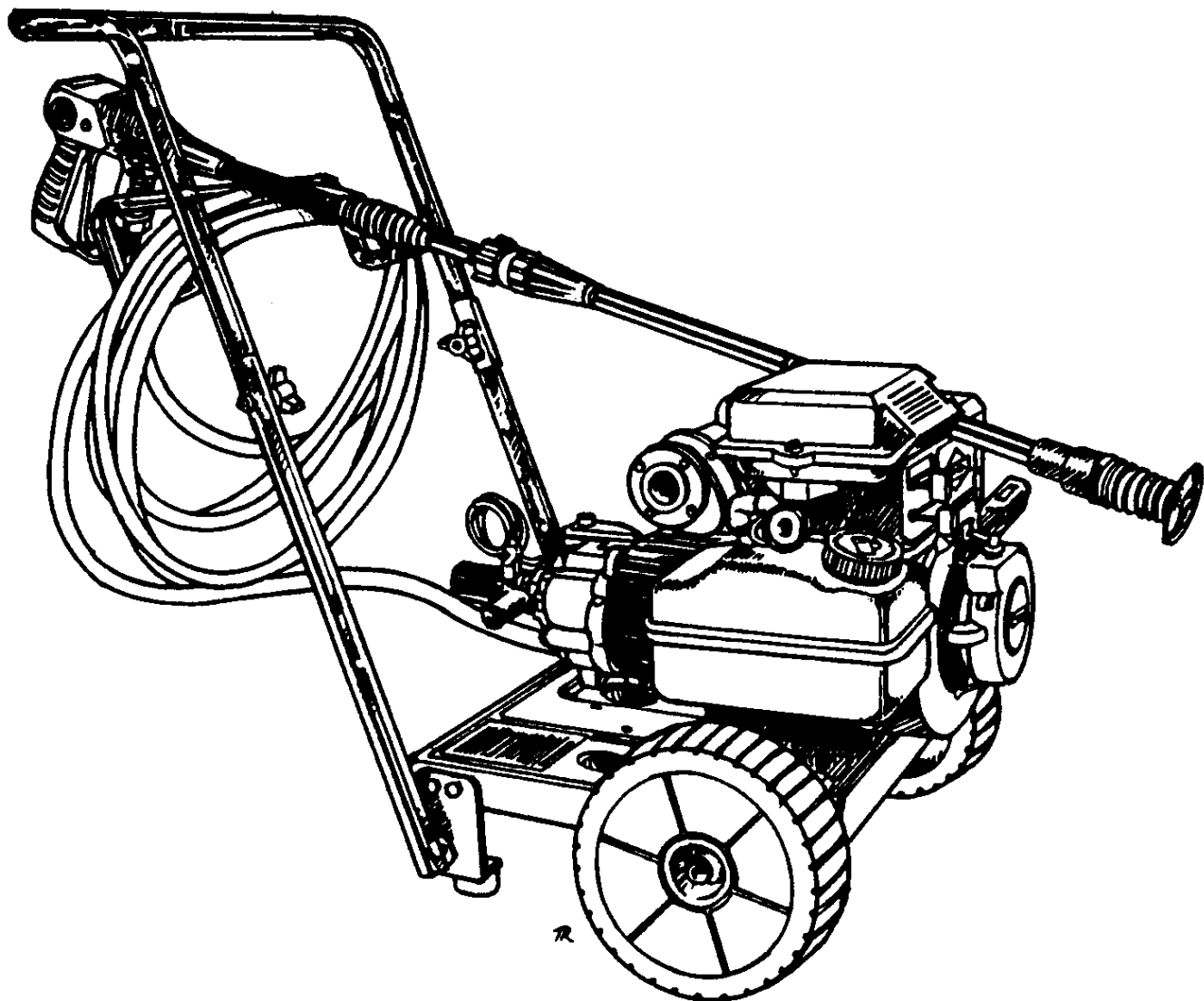


Parts Manual

Mfg. No: 0597-0
3,000 CP



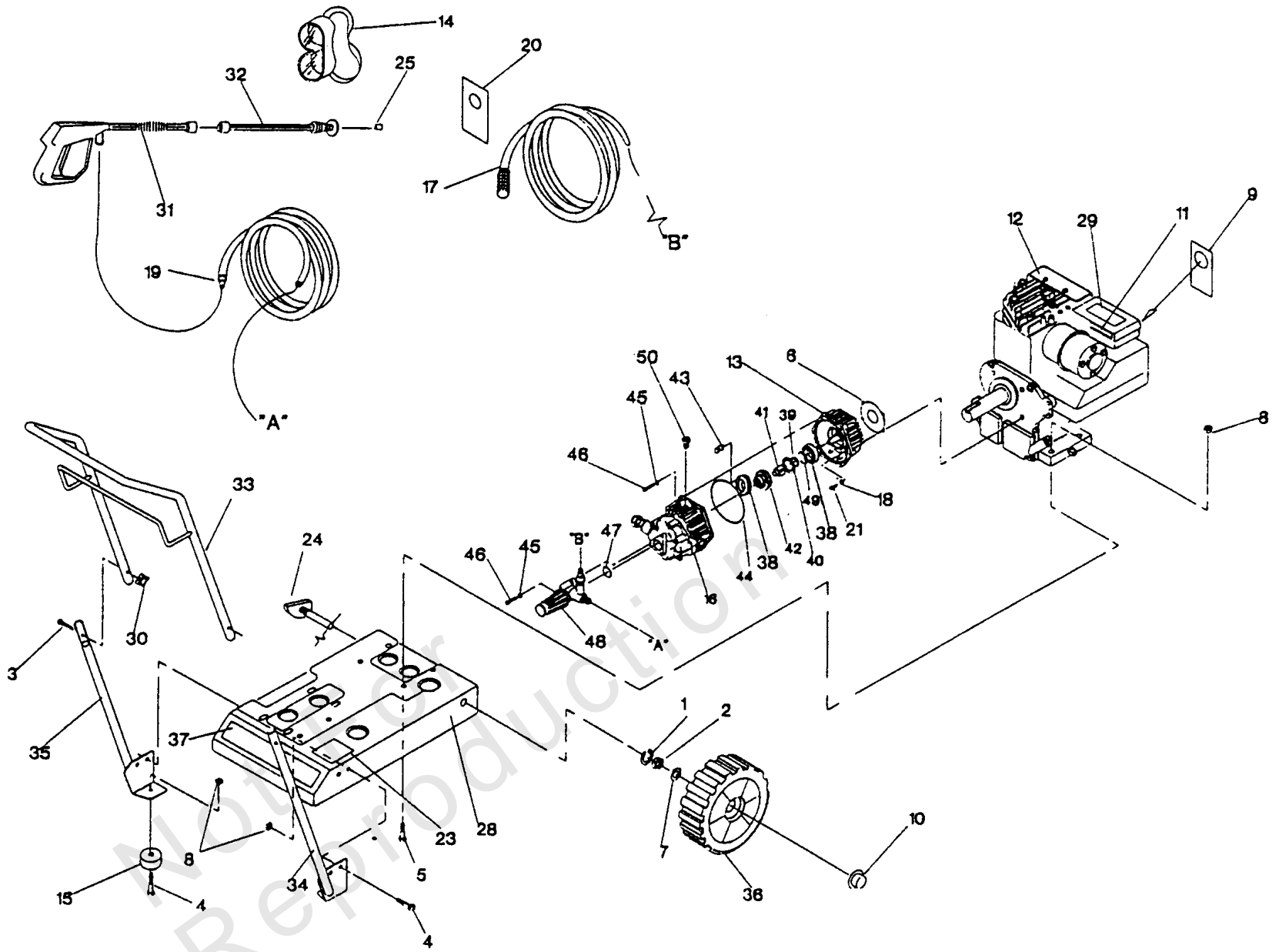
Model Components	Page
Pressure Washer.....	4
Pump.....	6
Torque Specification Chart.....	10

Not For
Reproduction

Pressure Washer

Note: Unless noted otherwise, use the standard torque specifications

Mfg. No: 0597-0



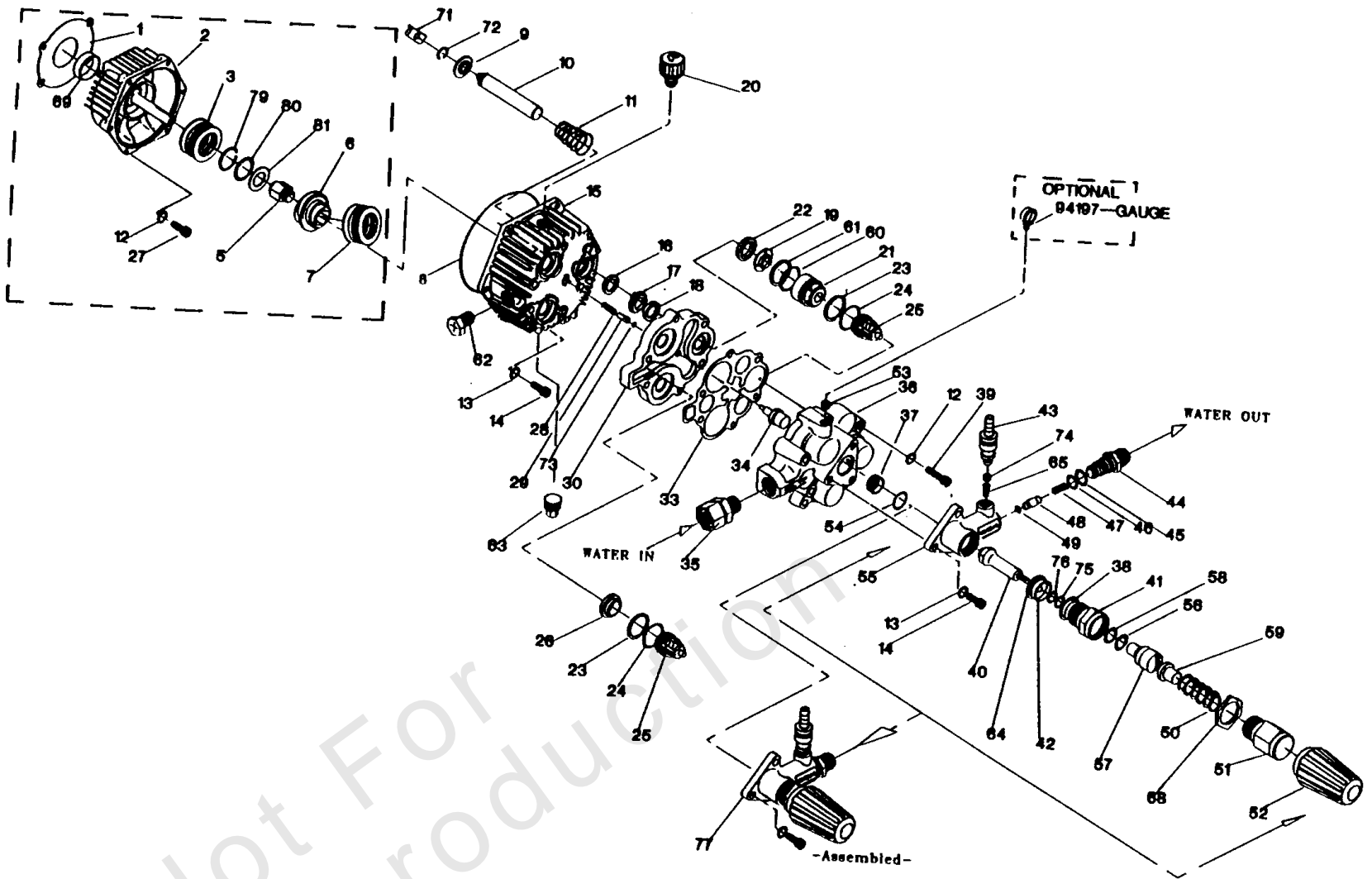
Pressure Washer

REF NO	PART NO	QTY	DESCRIPTION
1	22246	2	5/8 Lock Washer
2	25391	2	5/8-18 Jam Hex Nut
3	31669	2	1/4-20 x 1-3/4 Carriage Bolt
4	39253	6	M8-1.25 x 20 Capscrew
5	39414	4	M8-1.25 x 35 Capscrew
6	93871	1	Engine Adaptor Gasket
7	49808	2	M12 Flat Washer
8	52858	10	M8-1.25 Locking Nut
9	70453	1	Oil Warning Tag (Yellow)
10	75402	2	.50 Dia. Pushnut
11	77816	1	Caution - Hot Muffler Decal
12	99627	1	B & S 3.5HP Engine
13	96430Z	1	Engine Adaptor
14	87815	2	Safety Goggles
15	87841	2	Donut Type Vibration Mount
16	95319A	1	Pump 1500 PSI
17	89800	0	Filter & Tube Assem. -(Replacement Only)
18	92479	4	M8 Ribbed Lock Washer
19	91629A	1	25' x 1/4 Hose
20	97566	1	MV Wand PW Hang Tag
21	23707	4	5/16"-24 x 1" Socket Head Capscrew
23	93217	1	Danger Decal - English
24	93728	2	Zinc 64mm Long Axle-Stud
25	94804	0	1.10 Dia. MV Nozzle (White) -(Replacement Only)
28	95902	1	Mounting Base
29	96413	1	Important Instructions Decal
30	97178	2	Handle Knob
31	97633	1	MV Gun
32	98539C	1	1.10 Orf. MV Wand
33	98696	1	Handle Assembly
34	98700A	1	RH. Leg/Tube-PW Assembly
35	98700B	1	LH. Leg/Tube-PW Assembly
36	99118	2	2 x 8 Plastic Wheel
37	98823	1	Logo Decal
38	93869	2	Thrust Bearing
39	95524	1	Push On Retainer
40	97570	1	Thrust Washer
41	95435	1	Hex Straight Shaft Adaptor
42	97671	1	Axial Cam 2 GPM
43	94944	3	Piston Pivot Shoe
44	93790	1	O-ring
45	93873	9	M6 Lock Washer
46	40945	9	M6 x 20mm Socket Head Capscrew
47	93723	1	O-ring
48	95212A	1	Unloader Assembly
49	97675	1	Cam C-ring
50	95454	1	Cap
--	198437GS	1	REPLACEMENT PUMP ASSEMBLY

Pump

Note: Unless noted otherwise, use the standard torque specifications

Mfg. No: 0597-0



Not For
Reproduction

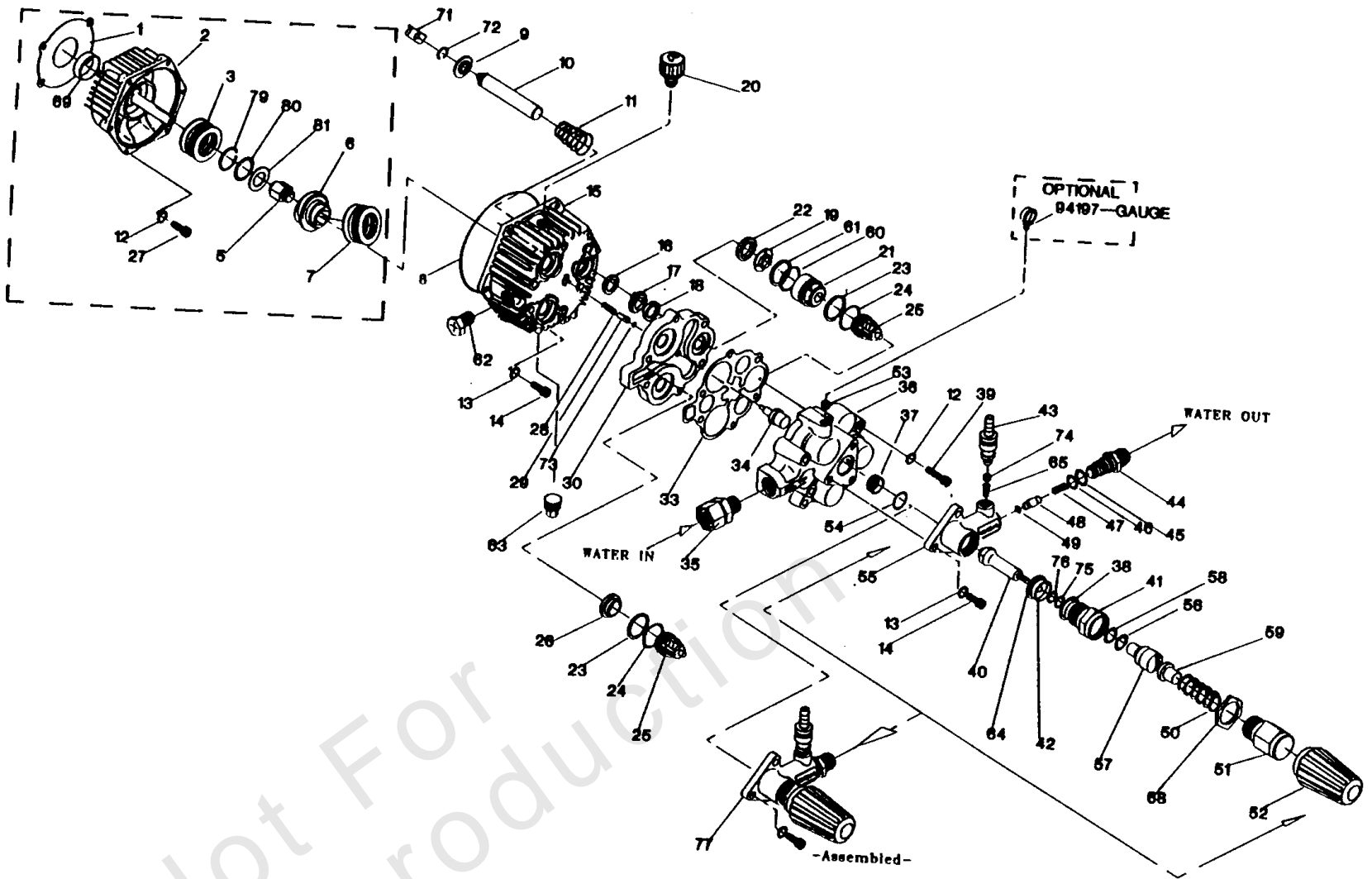
Pump

REF NO	PART NO	QTY	DESCRIPTION
1	93871	1	Engine Adaptor Gasket
2	96430Z	1	Engine Adaptor
3	93869	1	Thrust Ball Bearing
5	95435	1	Engine Adaptor
6	97671	1	Axial Cam
7	93869	1	Thrust Roller Bearing
8	93790	1	114 x 119 x 2.6 O-ring
9	95386	3	Piston Spring Retainer
10	95217	3	Piston, #15 S.S.
11	96400	3	Piston Return Spring
12	92479	10	M8 Ribbed Lock Washer
13	93873	9	M6 Ribbed Lock Washer
14	40945	7	M6 x 1.0 x 20mm Capscrew
15	94404V	1	Aluminum Crankcase
16	93680	3	Piston Oil Seal
17	93668	3	Pilot Spacer
18	93667	3	Seal
19	96015	3	Bearing Ring Seal
20	95454	1	Oil Fill/Breather
21	95895	3	High Pressure Port Tower
22	96052	3	High Pressure Seal (black)
23	95504	6	Back-up Ring
24	95503	6	O-Ring 2.62 x 17.12mm
25	96005	6	Valve Check Kit
26	95896	1	Check Valve Seat Support
27	95531	4	5/16"-24 x 3/4" Bolt
28	93652	1	Thermal By-pass Spring
29	95416	1	By-pass Piston
30	94402V	1	Spacer Plate
33	93645	1	Head Gasket
34	93644	1	Thermal By-pass Actuator
35	95320	1	Garden Hose Connector
36	94400V	1	Cylinder Head A brass
37	95382	1	Spindle Seat
38	93722	2	O-Ring, 0.68 x 0,81 x 0,06
39	93874	6	M8-1.25 x 75mm Capscrew
40	95373	1	Unloader Assembly Spindle
41	95367	1	Unloader Piston Guide
42	95372	1	O-Ring 1.78 x 14mm
43	95378	1	Chemical Injector Fitting
44	95377	1	High Pressure Outlet Adaptor
45	93788	1	O-ring 1.78 x 12.4mm
46	93787	1	O-Ring 1.78 x 15.6mm
47	95376	1	Spring
48	95374	1	High Pressure Outlet Piston
49	95375	1	O-ring, #2.4 x 4.3
50	95365	1	Pressure Adjust Spring
51	95364A	1	Pressure Adjust Adaptor with groove
52	95381A	1	Pressure Adjust Handle (red)
53	96137	1	1/8" NPT Pipe Plug
54	93723	1	O-Ring 2.6 x 20.2

Pump

Note: Unless noted otherwise, use the standard torque specifications

Mfg. No: 0597-0



Not For
Reproduction

Pump

REF NO	PART NO	QTY	DESCRIPTION
55	95216	1	Pressure Relief Valve Body
56	95369	1	Back-up O-ring 11 x 12.4
57	95368	1	Unloader Piston
58	95370	1	O-ring 1.78 x 7.65
59	95363	1	Spring Support
60	96069	3	Quad-Ring 0.09 x 1.06
61	95506	3	Back-up Ring
62	95453	1	Sight Gauge Assembly
63	57163	1	3/8" Magnetic Plug
64	95371	1	Piston Support O-Ring
65	95380	1	Chemical Injector Spring
68	95366	1	M18 x 1.0 Nut
69	-----	1	NOT USED ON THIS MODEL
71	94944	3	Piston Pivot Shoe
72	94284	3	C-Ring Retainer
73	93876	1	O-Ring, 0.12 x 0.25 x 0.6
74	95379	1	Ball
75	93656	1	O-Ring 1.78 x 6.07
76	93657	1	Back-up Ring 1.24 x 6.7
77	95212A	1	Unloader Assembly
79	97675	1	Cam Driver Retainer
80	95524	1	Washer Retainer
81	97570	1	Thrust Washer

Hardware Identification & Torque Specifications

Torque Specification Chart								
FOR STANDARD METRIC MACHINE HARDWARE (Tolerance ± 20%)								
Property Class	5.6		8.8		10.9		12.9	
	Class 5.6		Class 8.8		Class 10.9		Class 12.9	
Size Of Hardware	in/lbs	Nm.	in/lbs	Nm.	in/lbs	Nm.	in/lbs	Nm.
	ft/lbs		ft/lbs		ft/lbs		ft/lbs	
M3	5.88	.56	13.44	1.28	19.2	1.80	22.92	2.15
M4	13.44	1.28	30.72	2.90	43.44	4.10	52.56	4.95
M5	26.4	2.50	60.96	5.75	5.97	8.10	7.15	9.7
M6	44.64	4.3	7.3	9.9	10.3	14	12.1	16.5
M7	5.2	7.1	12.1	16.5	16.9	23	19.9	27
M8	7.7	10.5	17.7	24	25	34	29	40
M10	15	21	35	48	50	67	59	81
M12	26	36	61	83	86.2	117	103	140
M14	42	58	101	132	136	185	162	220
M16	64	88	147	200	210	285	250	340
M18	89	121	202	275	287	390	346	470
M20	126	171	290	390	405	550	486	660
M22	169	230	390	530	559	745	656	890
M24	217	295	497	375	708	960	840	1140
M27	320	435	733	995	1032	1400	1239	1680
M30	435	590	995	1350	1401	1900	1681	2280
M33	590	800	1349	1830	1902	2580	2278	3090
M36	759	1030	1740	2360	2441	3310	2935	3980
M39	988	1340	2249	3050	3163	4290	3798	5150

Torque Specification Chart						
FOR STANDARD MACHINE HARDWARE (Tolerance ± 20%)						
Hardware Grade	No Marks		SAE Grade 5		SAE Grade 8	
	SAE Grade 2		SAE Grade 5		SAE Grade 8	
Size Of Hardware	in/lbs	Nm.	in/lbs	Nm.	in/lbs	Nm.
	ft/lbs		ft/lbs		ft/lbs	
8-32	19	2.1	30	3.4	41	4.6
8-36	20	2.3	31	3.5	43	4.9
10-24	27	3.1	43	4.9	60	6.8
10-32	31	3.5	49	5.5	68	7.7
1/4-20	66	7.6	8	10.9	12	16.3
1/4-28	76	8.6	10	13.6	14	19.0
5/16-18	11	15.0	17	23.1	25	34.0
5/16-24	12	16.3	19	25.8	29	34.0
3/8-16	20	27.2	30	40.8	45	61.2
3/8-24	23	31.3	35	47.6	50	68.0
7/16-14	30	40.8	50	68.0	70	95.2
7/16-20	35	47.6	55	74.8	80	108.8
1/2-13	50	68.0	75	102.0	110	149.6
1/2-20	55	74.8	90	122.4	120	163.2
9/16-12	65	88.4	110	149.6	150	204.0
9/16-18	75	102.0	120	163.2	170	231.2
5/8-11	90	122.4	150	204.0	220	299.2
5/8-18	100	136	180	244.8	240	326.4
3/4-10	160	217.6	260	353.6	386	525.0
3/4-16	180	244.8	300	408.0	420	571.2
7/8-9	140	190.4	400	544.0	600	816.0
7/8-14	155	210.8	440	598.4	660	897.6
1-8	220	299.2	580	788.8	900	1,244.0
1-12	240	326.4	640	870.4	1,000	1,360.0

The guides and ruler furnished below are designed to help you select the appropriate hardware.



Nut, M8

Thread Diameter (mm)

Inside Diameter (in) Threads per inch

Nut, 1/2-16



Screw, M8- 1.25 x 25

Thread Diameter (mm) Distance between threads (mm) Body Length (mm)

Body Diameter Threads per inch Body Length (in)

Screw, 1/2- 16 x 2



Standard Hardware Sizing

When a washer or nut is identified as 1/2" (M8), this is the *Nominal size*, meaning the *inside diameter* is 1/2 inch (8mm metric thread diameter); if a second number is present it represents the *threads per inch* (distance between threads).

When bolt or capscrew is identified as 1/2 - 16 x 2" (M8 - 1.25 x 50), this means the *Nominal size*, or body diameter is 1/2 inch (8mm metric thread diameter), the second number, 16, represents the *threads per inch*, (*distance between threads*). The final number is the body length of the bolt or screw, 2 inches (50mm).

NOTES

- These torque values are to be used for all hardware excluding: locknuts, self-tapping screws, thread forming screws, sheet metal screws and socket head setscrews.
- Recommended seating torque values for locknuts:
 - for prevailing torque locknuts - use 65% of grade 5 torques.
 - for flange whizlock nuts and screws - use 135% of grade 5 torques.
- Unless otherwise noted on assembly drawings, all torque values must meet this specification.

Common Hardware Types

Hex Head Capscrew



Washer



Carriage Bolt



Hex Nut

Wrench & Fastener Size Guide

1/4" Bolt or Nut Wrench—7/16"	5/16" Bolt or Nut Wrench—1/2"	3/8" Bolt or Nut Wrench—9/16"	7/16" Bolt or Nut Wrench (Bolt)—5/8" Wrench (Nut)—11/16"	1/2" Bolt or Nut Wrench—3/4"
M6 Bolt or Nut Wrench—10mm	M8 Bolt or Nut Wrench—13mm	M10 Bolt or Nut Wrench—17mm	M12 Bolt or Nut Wrench—19mm	M14 Bolt or Nut Wrench—22mm

